

ESFOUR ENGINEERING WORKS

MANUFACTURER OF COMPLEX MACHINERY, FABRICATED PRESSURE VESSELS
AND PIPING COMPONENTS

PLOT NO: R-327,
RABALE, NAVI MUMBAI
WWW.ESFOURINDIA.COM

About us:

- ✚ We are manufacturers of Complex Machinery, Heat Exchangers, Pressure vessels, Agitators, Reactors etc.
- ✚ We also manufacture piping components and spool pieces.
- ✚ We are in the market as manufacturer since the last 35 years
- ✚ We have our office and manufacturing unit in Mumbai
- ✚ We have skilled and experienced people to take care of the complicated requirement of the job.
- ✚ Our presence in the market SINCE 1979 has earned us a good reputation and good will.
- ✚ That will help us to push your products into the market.
- ✚ Being driven by engineers we can manage the complex design and manufacturing requirement of job.
- ✚ We can train staff to carry out special requirement such as installation and commissioning at site.
- ✚ As we have a manufacturing facility in Mumbai where we can carry out the servicing/maintenance in house or at site as per the requirement.
- ✚ We can also undertake complete After Sales service.
- ✚ We can participate in all relevant major exhibitions/events in India to showcase your products

ASPHALT ROTARY SCREEN DRUM DRYER, WEIGHT: 35 MT





BURNER
SIDE
VIEW OF
ASPALT
DRUM

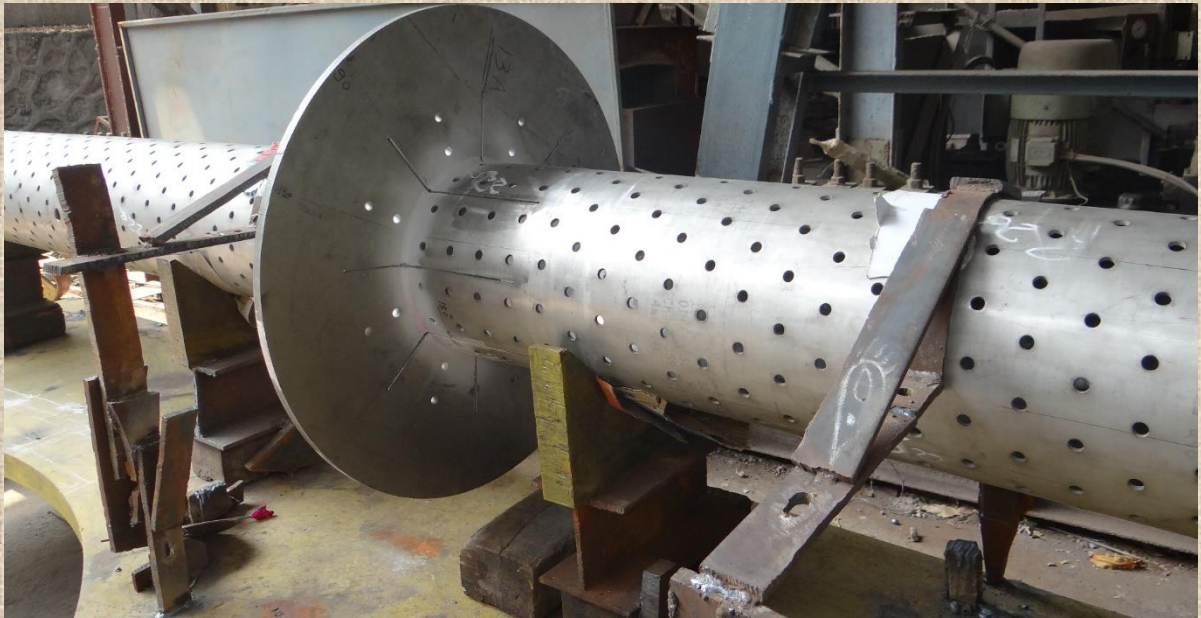


CEMENT MIXER

PADDLE SHAFT MIXED WITH HARD LINER



INCONEL 617 PERFORATED LINER ASSEMBLY FOR L&T AEROSPACE FOR
VIKRAM SARABAI SPACE CENTER (VSSC)

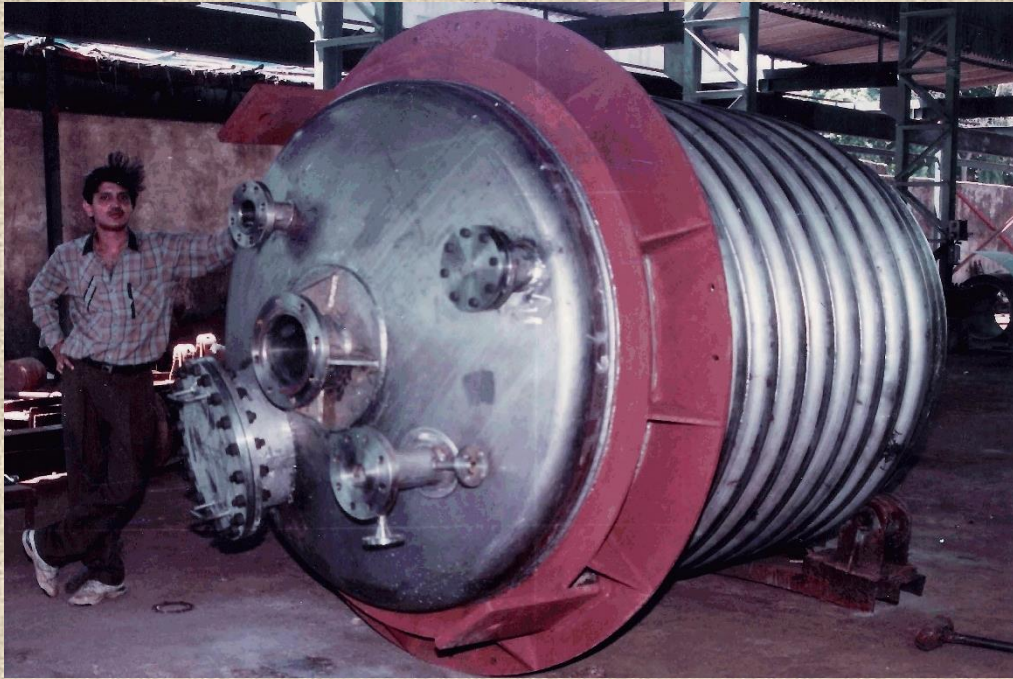


**FLUE GAS BURNER WITH FLAME ARRESTOR FOR HARDILIA UNIMER AND
BALMER LAWRIES**

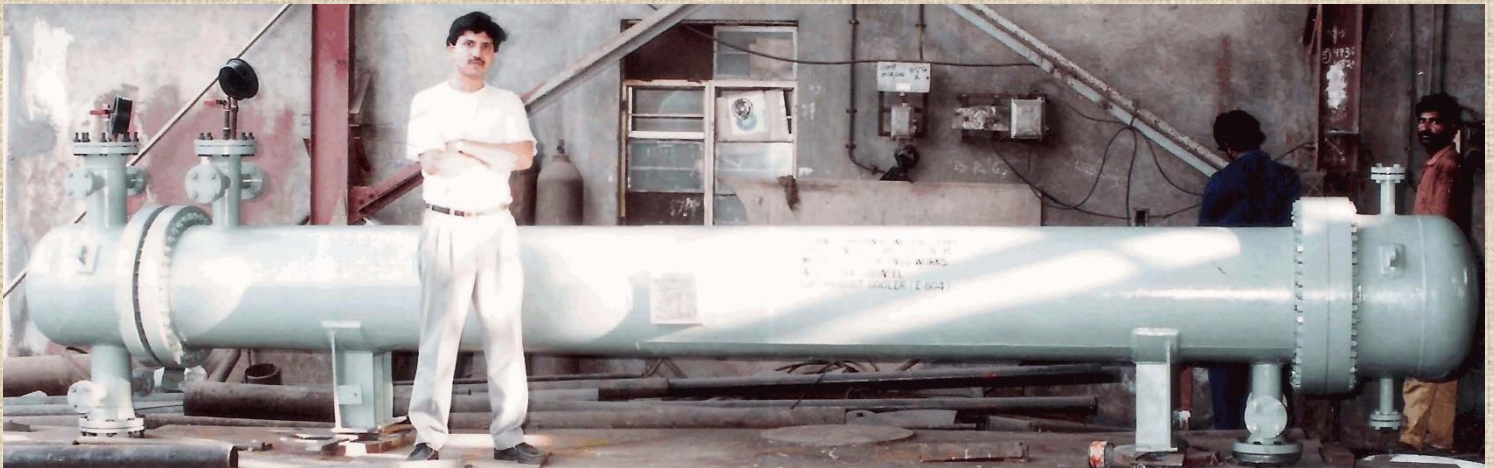


40 METER LONG, TPI: KVAERNER POWER GAS





JACKETED PRESSURE VESSEL FOR RIL

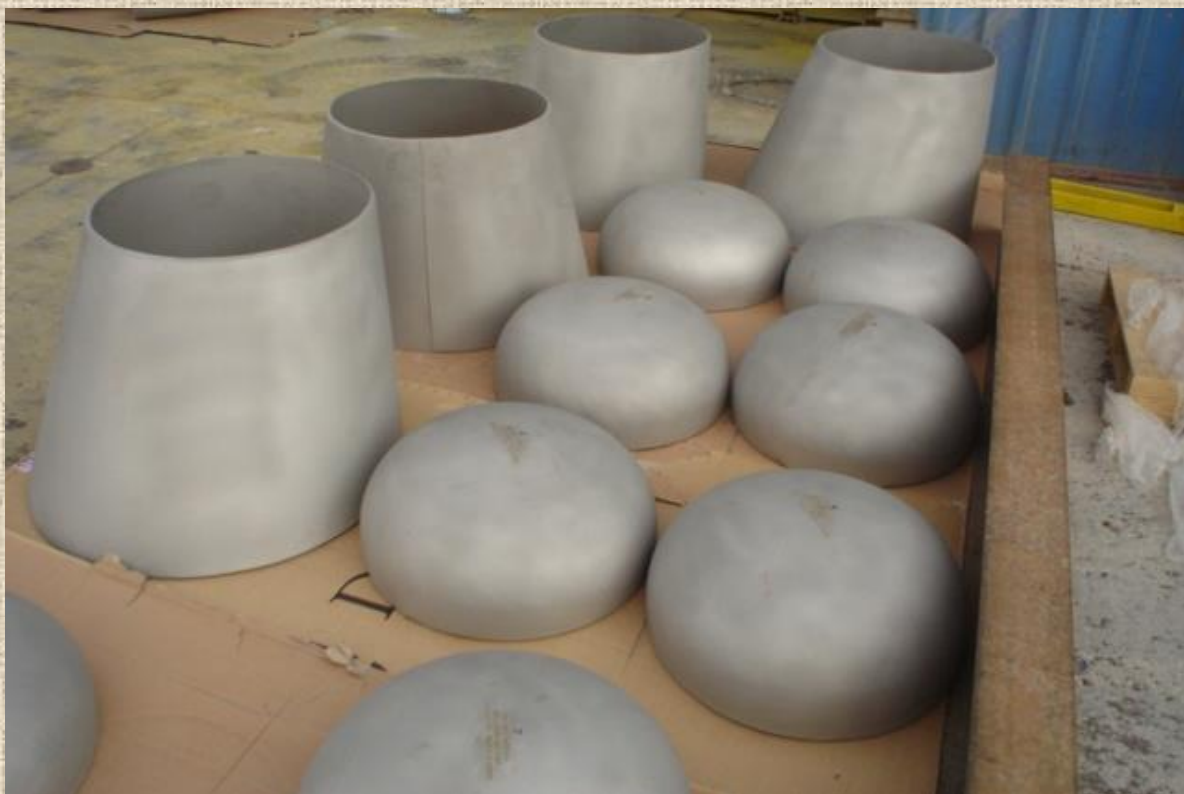


FLOATING TUBE SHEET HEAT EXCHANGER FOR BHEL



SKID MOUNTED CONDENSATE POLISHER PLATE WITH PIPING AND INSTRUMENTATION AND PUMPS ETC

PIPE FITTINGS





BURNER SYSTEM PIPING SPOOL FOR L&T AEROSPACE



BARRED TEE



BRANCH WELDED SS316L TEE WITH RF PAD, DESIGNED & MANUFACTURED AS PER ASME B31.3



46MM THICK SS304L EXPANDER AND REDUCER ASSLY WITH 200MM THICK FLANGE FOR L&T AEROSPACE



DESIGN AND MANUFACTURE OF ORIFICE PLATES WITH RTJ HOLDER